
Preparing for Winter Weather

DISTRICT 97 EMERGENCY CLOSING PROCEDURES
AND E-LEARNING DAYS



Be Safe and Healthy - Winter Preparedness

Emergency Closings Due to Inclement Weather

District 97 always strives to have schools open.

However, our top priority is the safety of our students and staff. If heavy snow or extreme cold make it dangerous to travel, we may need to close schools.



Making the Decision to Close Schools



The superintendent determines when and if conditions warrant the closing of schools. This decision is normally made in consultation with superintendents from districts 90 and 200, village officials, and our transportation provider.

Because of the many families enrolled in both District 97 and District 200, we strive for alignment when circumstances allow.

Variables Affecting the Decision

- Weather forecasts (advisories, watches, warnings, amount/timing of precipitation, temperature)
- Internal and external building conditions (power, light, heat, clear sidewalks)
- Availability of bus transportation and food service
- Conditions of streets, sidewalks and alleyways throughout the community



Two Scenarios for School Closings

E-LEARNING DAY VS.
EMERGENCY DAY

If there is sufficient time
to inform staff, families
and students



**CONTINUITY OF
LEARNING, NO IMPACT
TO SCHOOL CALENDAR**

If the weather were to
develop suddenly, or if
there wasn't enough time
to notify everyone to
have devices with them



**NO INSTRUCTION, DAY
IS MADE UP AT THE END
OF THE YEAR**



How will District 97 communicate school closures and E-Learning Days?

District 97 seeks to make and communicate decisions by 8 p.m. the night before, or no later than 5:30 a.m. the next day.

Notifications are sent via:

- Email to all staff and families
- Robocall and text message
- Facebook and Twitter (@OakPark97)
- District 97 website
- Emergency Closing Center



What is an E-Learning Day?



E-Learning Days provide an opportunity for students to learn from home on days when the school/district otherwise would have been canceled.

Students will have approximately **five hours** of learning/assignments—both synchronous (live with teacher) and asynchronous (self-paced).

More details: www.op97.org/elearning



E-Learning Day: Elementary Schools

Teachers take attendance at **8 a.m.** via Zoom or Google Meet.

Assignments and instructions are shared via teacher web pages, learning management systems (Seesaw or Google Classroom), and/or email.

SAMPLE SCHEDULE

Time	Monday	Tuesday	Wednesday	Thursday	Friday
8:00-8:15	Morning Meeting/Shared Reading	Morning Meeting/Shared Reading	Morning Meeting/Shared Reading		Morning Meeting/Shared Reading
8:15-8:30				2nd Step	
8:30 - 8:45		Word Study	Word Study	Word Study	Word Study
8:45-9:00	SPANISH				
9:00-9:15		English Language Arts (RUoS)	English Language Arts (RUoS)	English Language Arts (RUoS)	
9:15-9:30	MUSIC				LIBRARY (8:45-9:30)
9:30-9:45					
9:45-10:00	English Language Arts (RUoS)	MUSIC			English Language Arts (RUoS)
10:00-10:15					
10:15-10:30		SPANISH	ART	Physical Education	
10:30-10:45	Writing (WUoS)	Writing (WUoS)	Writing (WUoS)	Writing (WUoS)	Writing (WUoS)
10:45-11:00					
11:00 - 11:15					
11:15-11:30	English Language Arts: Enrichment and Intervention	English Language Arts: Enrichment and Intervention	English Language Arts: Enrichment and Intervention	English Language Arts: Enrichment and Intervention	English Language Arts: Enrichment and Intervention
11:30-11:45					
11:45-12:00					
12:00 - 12:15					
12:15-12:30					
12:30-12:45					
12:45-1:00	Mathematics: Enrichment and Intervention	Mathematics: Enrichment and Intervention	Mathematics: Enrichment and Intervention	Mathematics: Enrichment and Intervention	Mathematics: Enrichment and Intervention
1:00-1:15					
1:15-1:30					
1:30-1:45					
1:45-2:00	MATH	MATH	MATH	MATH	MATH
	Physical Education Activity	Physical Education Activity	Physical Education Activity	Physical Education Activity	Physical Education Activity
2:00 - 2:15					
2:15-2:30			Dismissal		
2:30-2:45	Science/Social Studies	Science/Social Studies		Science/Social Studies	Science/Social Studies
2:45-3:00					



Be Safe and Healthy - Winter Preparedness

SAMPLE SCHEDULE

E-Learning Day: Middle Schools

Teachers take attendance at 9 a.m. via Zoom or Google Meet.

Assignments and instructions are shared via Canvas.

GBMS Bell Schedules

6th Grade Schedule A Day			
Time	Period	Mins	Lunch/SOAR
9:00 to 10:15	1	75	
10:18 to 10:55	2	40	SOAR
10:58 to 12:13	3/4	75	
12:16 to 12:53	5	37	Lunch
12:56 to 2:12	6	76	
2:15 to 3:30	7	75	

7th/8th Grade Schedule A Day			
Time	Period	Mins	Lunch/SOAR
9:00 to 10:15	1	76	
10:18 to 11:34	2/3	75	
11:37 to 12:53	4/5	75	8th Lunch/SOAR
12:56 to 2:12	6	76	7th Lunch/SOAR
2:15 to 3:30	7	76	

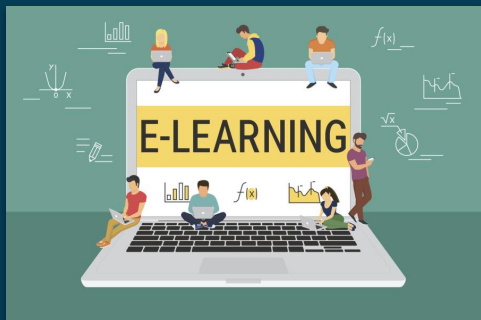
All Grade Levels C Day Schedule			
	6th Grade	7th Grade	8th Grade
9:00 to 9:39	1	1	1
9:42 to 10:18	7	7	7
10:21 to 10:57	6	6 (SOAR)	6
11:00 to 11:36	2/5 (Lunch)	2/3	2/3
11:39 to 12:15	3/4	4/5	4/5 (Lunch)
12:18 to 12:54	13	13 (Lunch)	13
12:57 to 1:33	8	8	8
1:36 to 2:12	14	14	14
2:15 to 2:51	9/12 (SOAR)	9/10	9/10
2:54 to 3:30	10/11	11/12	11/12 (SOAR)

6th Grade Schedule B Day			
Time	Period	Mins	Lunch/SOAR
9:00 to 10:15	8	75	
10:18 to 10:55	9	40	SOAR
10:58 to 12:13	10/11	75	
12:16 to 12:53	12	37	Lunch
12:56 to 2:12	13	76	
2:15 to 3:30	14	75	

7th/8th Grade Schedule B Day			
Time	Period	Mins	Lunch/SOAR
9:00 to 10:15	8	76	
10:18 to 11:34	9/10	75	
11:37 to 12:53	11/12	75	8th Lunch/SOAR
12:56 to 2:12	13	76	7th Lunch/SOAR
2:15 to 3:30	14	76	



How has District 97 prepared for E-Learning?



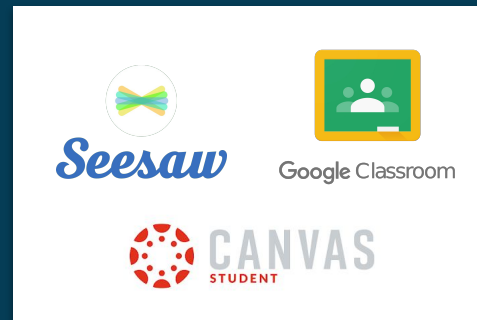
STATE-APPROVED PLAN

Staff participate in annual review of the plan, which was approved by the state and D97 Board of Education in 2021.



DEVICES AND FAMILY ACCESS

All D97 students and staff have been issued a device. At-home learning is supported through the Internet for All program.



IMPROVED COMMUNICATION

Learning Management Systems are used by all grades: Seesaw for K-2, Google Classroom for 3-5 and Canvas for 6-8.



Tips for District 97 Families

DRESSING FOR COLD WEATHER

adding layers will help keep you warm as the temperature drops

CHILLY



1-2 layers
long layer
outer layer to keep out wind, rain
warm shoes water proof

COLD



2-3 layers
gloves
warm hat
outer layer to keep out wind, wet snow
boots water proof

EXTREME COLD



3+ layers
1 insulating
gloves
warm hat
face mask
outer layer to keep out wind
boots water proof

 weather.gov/safety



Tips for District 97 Staff and Families



Review the E-Learning Plan.

Details can be found at www.op97.org/elearning.



Follow us on social media.

District news and updates are shared frequently Facebook and Twitter (@OakPark97).



Sign up for text messages.

Individuals must opt in to SMS messages from District 97 by texting **YES to 79041 or 87569.**

